

WARNINGS AND INSTRUCTIONS

Please read these warnings and instructions carefully before using this product and retain them for future use.

WARNING: This product contains nicotine. Nicotine is an addictive chemical.

ADDITIONAL HEALTH INFORMATION:

- Nicotine can:
 - Harm your baby if you are pregnant or nursing.
 - Increase your heart rate and blood pressure and aggravate diabetes.
 - Cause dizziness, nausea, and stomach pain.
- Inhalation of this product may aggravate existing respiratory conditions.

WARNING: To reduce the risk of choking or poisoning:

- Keep the Green Smoke® e-vapor device and items out of the reach of children.
- Do not use the Green Smoke® battery or cartridge if the packaging appears to have been tampered with.
- Dispose of Green Smoke® e-vapor device and items properly. Refer to Disposal Instructions for further details.
- Each cartridge contains nicotine which can be poisonous. In the event a cartridge or any other item is ingested, call a Poison Control Center immediately. 1-800-222-1222.

WARNING: To reduce the risk of injury, do not use your Green Smoke® e-vapor device or items if they:

- become wet or are immersed in any liquid.
- appear damaged or broken.
- have been exposed to excessive heat.
- are operating in an erratic manner.
- are unusually hot to the touch.

WARNING: To reduce risk of injury:

- If your Green Smoke® battery or cartridge appears to be leaking, do not use it. If the liquid comes in contact with the skin or eyes, wash with large amounts of water and seek medical advice.

- Your e-vapor device and items contain no user-serviceable parts. Do not attempt to open, service or repair; doing so may cause electric shock, thermal burns or fire.

- Do not use, store or charge any items in or near heat sources such as radiators, stoves, hot appliances or fires. High or low temperatures may cause battery fluid leakage, thermal burns, battery explosion or fire. Do not dispose of battery in fire.

- Do not use any Green Smoke® items with any other manufacturer's e-vapor device items. Do not attempt to charge the Green Smoke® battery with any other charging device. The Green Smoke® e-vapor device should only be used with Green Smoke® items.

FCC STATEMENT

NOTE: This equipment has been tested and found to comply with the limits for a Class B digital device, pursuant to part 15 of the FCC rules. Operation is subject to the following two conditions: (1) This device may not cause harmful interference, and (2) this device must accept any interference received, including interference that may cause undesired operation. These limits are designed to provide reasonable protection against harmful interference in a residential installation. This equipment generates, uses and can radiate radio frequency energy and, if not installed and used in accordance with the instructions, may cause harmful interference to radio communications. However, there is no guarantee that interference will not occur in a particular installation. If this equipment does cause harmful interference to radio or television reception (a) when charging, which can be determined by disconnecting and then reconnecting the device to the charging source, or (b) when in use, which can be determined by drawing on and ceasing to draw on the device, the user is encouraged to try to correct the interference by one or more of the following measures:

- Reorient or relocate the receiving antenna.
- Increase the separation between the equipment and receiver.
- If the equipment is connected to the charger, then connect the equipment into an outlet or circuit different from that to which the receiver is connected.
- Cease to use (i.e., cease drawing on) the device.

Changes or modifications not expressly approved by Nu Mark could void the user's authority to operate the equipment.

Use only for intended purposes.

GREEN SMOKE® GUARANTEE

We stand by all Green Smoke® e-vapor products. Every experience should meet your expectations. If it doesn't, we'll make it right. Call 1-888-427-9258 for details.

LIMITED WARRANTIES

We warrant a Green Smoke® e-vapor cartridge to function properly up to its "do not use after" date. We warrant all other Green Smoke® items and accessories to function properly for six months from the date of purchase.

These warranties do not apply to damage caused by any modification or alteration of the Green Smoke® battery, cartridges or accessories or if damage is caused by use with cartridges or accessories from any other manufacturer.

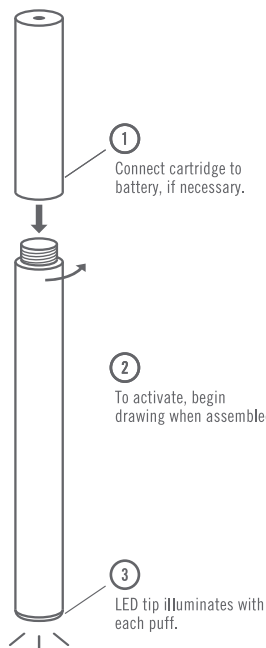
Please call 1-888-427-9258 or go to GreenSmoke.com for details, including proof of purchase and age-verification requirements, regarding Green Smoke® Guarantee and the LIMITED WARRANTY offered on Green Smoke® products.

Green Smoke® and related design marks are trademarks of Nu Mark LLC.
© 2018 Nu Mark LLC K8527

GREEN SMOKE® E-VAPOR

PRODUCT INFORMATION GUIDE

INSTRUCTIONS FOR USE



GREEN SMOKE® ITEMS:

- E-vapor Battery
- Replacement e-vapor cartridges
- E-vapor USB Charger
- E-vapor accessories available at GreenSmoke.com

RECHARGING YOUR GREEN SMOKE® BATTERY WITH THE GREEN SMOKE® USB CHARGER

- When the battery needs to be recharged, the LED tip will blink rapidly and repeatedly.
- If the battery is connected to the cartridge, first disconnect it.
- Screw the battery into the USB charger.
- Insert the USB charger into a USB port. The LED tip on the battery will illuminate to indicate the battery is charging.
- Once the battery is fully charged, the LED tip will turn off.
- Disconnect battery from USB charger when fully charged.
- Connect the cartridge to the battery by turning the cartridge onto the battery.

REPLACING YOUR GREEN SMOKE® CARTRIDGES

- When your cartridge is almost empty, you will notice a reduction in flavor and vapor. Please replace the cartridge. The cartridge is not refillable.
- Promptly discard the empty cartridge responsibly to prevent injury or access by children.
- Use only Green Smoke® cartridges with your Green Smoke® device.
- Screw the new cartridge onto the Green Smoke® battery by turning the cartridge onto the battery.

HANDLING AND CARE INFORMATION

- Clean Green Smoke® items with a dry cloth
- Keep all Green Smoke® items dry. Do not immerse them in any liquid for any reason.
- Store Green Smoke® items in a clean, dry, cool place. Do not store them in high temperatures or near fire or flames. Do not refrigerate or freeze items.
- Do not leave Green Smoke® items unattended where children or pets could gain access to them.

DISPOSAL INSTRUCTIONS

- Dispose of used Green Smoke® items responsibly
- Your Green Smoke® e-vapor device contains a Lithium-ion rechargeable battery. When discarded, it must be recycled or disposed of properly in accordance with state or local requirements. Do not crush battery (e.g., such as in a trash compactor). Do not dispose of any part of this product in fire or flame. For further information on recycling and disposal of the battery, call 1-877-2-RECYCLE (1-877-273-2925) or contact your local waste management officials.

GREEN SMOKE® RECYCLING PROGRAM

You can also take advantage of our recycling programs for Green Smoke® batteries and cartridges. To learn more about recycling Green Smoke® cartridges, contact our Customer Care team at 1-888-427-9258 or visit www.GreenSmoke.com/recycling. To recycle batteries, visit Call2Recycle.org or call 1-877-2-RECYCLE (1-877-273-2925) to find a participating Call2Recycle® collection site and simply drop off your batteries at no cost to you.

TROUBLESHOOTING

For troubleshooting information, please visit GreenSmoke.com or call 1-888-427-9258.

For additional information, including product ingredients, please visit GreenSmoke.com or call 1-888-427-9258.